

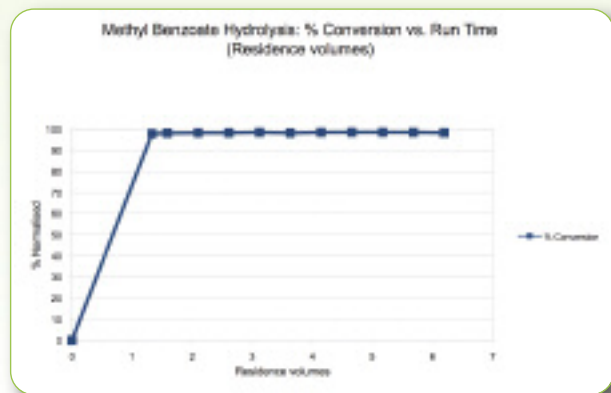
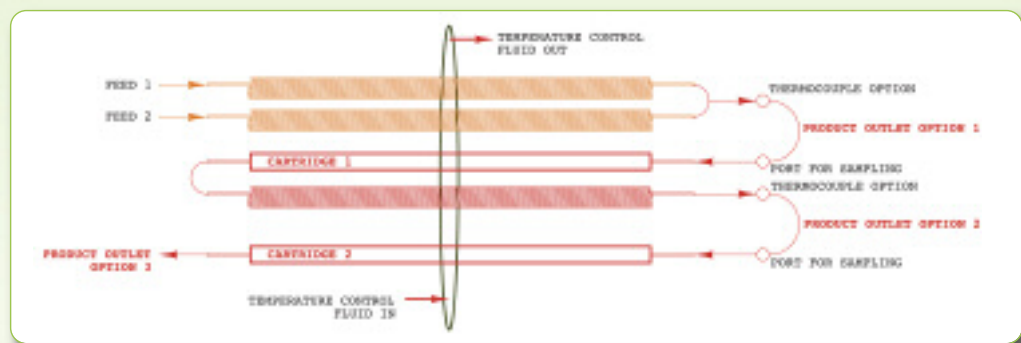
Salamander Continuous Reactor Technology

The cost effective way
to bring Continuous
Chemistry to every lab!



Chemists looking to exploit the advantages of Continuous Processing on a lab scale can now access a cost effective, tubular flow reactor to assist them.

Our Salamander is a flexible off-the-shelf system that operates over a wide range of temperatures and pressures and can easily be configured by the user, allowing a choice of residence volumes, sampling options and the incorporation of cartridges.



Introduction

Continuous flow chemistry is gaining ever increasing interest within the Pharma and Fine Organics sectors of the chemical industry and within Academia, however it remains under utilised.

To fully exploit the advantages of continuous processing, a range of affordable, simple to use



equipment for lab scale evaluation in flow is required, which can be deployed in every R&D laboratory and accessed by every chemist. The Salamander has been created to meet this need.

The Salamander is designed to give you all the functionality you need in an easy to use

format. Costs are kept to a minimum by linking with standard pumps and heater/chillers, making the most of lab equipment that you already have.

Smart design features include the ability to sample at different points

along the reactor path, to measure temperature within the reaction and to add auxiliary reagent feeds.

Tubular coils, which are available in a range of materials, are readily replaced and can be considered consumables. Sections of coil are interchangeable with cartridges that can be loaded with solid-supported catalysts or reagents.

The Salamander can readily be applied to your flow chemistry, whether you want to investigate solution phase reactions, evaluate solid supported reagents and catalysts, or make gram quantities of material.



- Excellent pressure capability with optional pressure control unit
- Modular design offering variable residence times
- Stainless steel, Hastelloy® or PEEK coils
- Can accept a tube or a packed column
- Compact (D 75mm; L 500mm); ready to use
- Very low cost

Salamander Continuous Reactor Technology

Features of the Salamander include:

- Excellent low and high temperature capability
- Precise temperature control and measurement at the point of reaction

Whether you are new to continuous chemistry and are looking for an affordable option to investigate where flow may add value within your sector, or you have more experience in continuous processing and are looking to deploy lab scale equipment more widely, Salamander will meet your needs.



If you would like to speak to a technical representative please call us on 01954 252522, e-mail sales@crduk.com, or alternatively you can visit www.cambridgereactordesign.com for further information.



Cambridge Reactor Design Ltd

Unit D2 Brookfield Business Centre Cottenham, CB24 8PS England, UK

T 0044 (0)1954 252522 F 0044 (0)1954 252566 E sales@crduk.com W www.cambridgereactordesign.com